



National Heritage Board of Latvia

The practice of preserving and presenting archaeological sites in Latvia

EAC 20th HERITAGE MANAGEMENT SYMPOSIUM

Dublin, 28.02.2019.

Sandra Zirne

Head of the Department of Archaeology and History,

National Heritage Board of Latvia

e- mail: sandra.zirne@mantojums.lv

TANĪSA HILLFORT IN RAUNA



Photo: J. Plētiena

Archaeological excavations in Tanīsa hillfort, organized by Board of monuments in 1927, lead by prof. Fr.Balodis.



The excavations in Tanīsa Hillfort were visited by President of Latvia Gustavs Zemgals and Minister for Education Jānis Pliekšāns.

LAKE LUBĀNS WETLANDS



Photo: J.Urtāns

During the 1950 – 1980 intensive melioration took place in different parts of Latvia. In the territory of the Lake Lubāns Wetlands 27 Stone Age settlements and 41 Bronze Age and Iron Age settlements were discovered during the works.

To carry out expert evaluation of art and antiquity objects, issue permits for their removal to other countries

Carry out national record keeping, gather information and study cultural heritage

Implement public control in the protection of cultural monuments

to finance the work of researching, conservation and renovation of cultural monuments from specifically assigned funds

National Heritage Board of Latvia



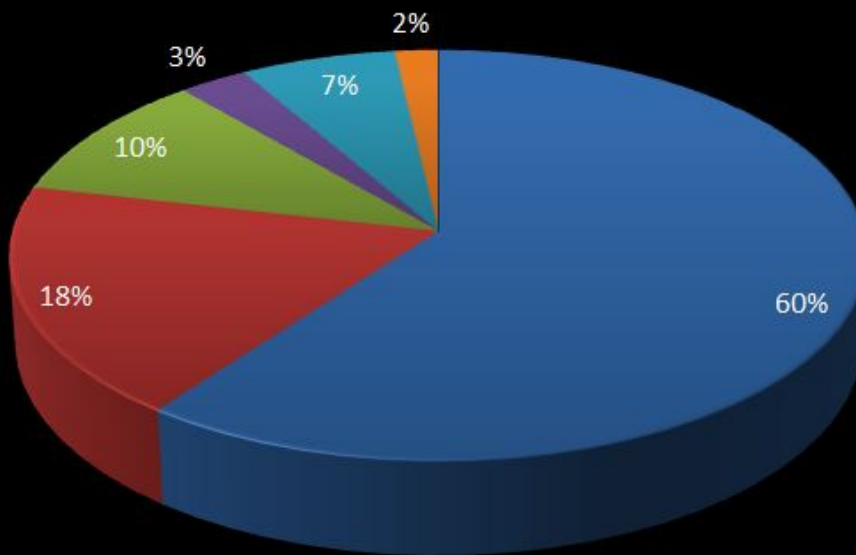
Suspend economic activities, provided the regulations on the protection of cultural monuments are not respected and the cultural monument is endangered, to administer penalties, bring action in respect to payment for damage

Revise documentation on the works related to cultural monuments

Issue instructions to cultural monument owners on utilization and preservation of the respective cultural monument

To issue permits of a certain type for conservation, renovation, repair and reconstruction of cultural monuments

ARCHAEOLOGICAL MONUMENTS- 2523



ANCIENT BURIAL PLACES

HILLFORTS

SETTLEMENTS, LAKE DWELLINGS, ANCIENT TOWNS,

MEDIEVAL CASTLES

ANCIENT CULT SITES

OTHER (MEDIEVAL FORTIFICATIONS, STONE CONSTRUCTIONS, ROADS, SHIP WRECKS ETC.)



LUDZAS KĪŠUKALNS HILLFORT



Photo: E.Šulcs

TERRITORY OF SPINGU HILLFORT AFTER FORESTRY WORKS



Photo: J. Urtāns

DVIETE RIVER VALLEY



The nature park "Dviete water-meadows" was established in 2004 with an aim to preserve natural water meadows. Territory is remarkable for its archaeological monuments: the settlement sites from the Stone Age up till Middle Ages, and Iron Age burial grounds.

TALSI HILLFORT



RAUNA MEDIEVAL CASTLE RUINS



Photo: I. Plētēna

KOKNESE MEDIEVAL CASTLE RUINS BEFORE AND AFTER THE CONSTRUCTION OF PĻAVIŅU HYDROELECTRIC POWER PLANT IN 1966



Photo: E. Šulcs

DAUGMALE HILLFORT AFTER THE CONSTRUCTION OF RIGA HYDROELECTRIC POWER PLANT IN 1974



Photo: E. Šulcs



TĒRVETE HILLFORT



Tērvete was one of the most notable Semigallian political and economic centres. The present castle reconstruction is carried out on the basis of archaeological material. It is located around 400 m from the primary mound.

Song Festival in the open-air stage at Rauna Medieval Castle ruins



Photo: Rauna Municipality





BAUSKA MEDIEVAL CASTLE



Photo: E.Šulcs

BAUSKA MEDIEVAL CASTLE



Conservation project concept:
to fully preserve the original
construction, at the same time not
losing the romantic air of the ruins
and their historical and emotional
value.



TURAIDA MUSEUM RESERVE



The Mission of Turaida Museum Reserve is to build a harmonious society by showing the development of Latvian wisdom of life and experience through natural, cultural and historical values accumulated in Turaida Region in the period of one thousand years.

TURAIDA MEDIEVAL CASTLE



Systematic archaeological excavations along with conservation and Reconstruction of medieval structures were carried out between 1974 and 1999. Works were led by archaeologist Jānis Graudonis (1913-2005), author of reconstruction project architect Gunars Jansons (1928-2013).

CĒSIS CASTLE COMPLEX



Photo: E. Šulcs

RIEKSTUKALNS (NUT HILL) HILLFORT



CĒSIS MANOR HOUSE





ĀRAIŠI MUSEUM PARK



Foto: J.Urtāns

ĀRAIŠI MUSEUM PARK



The project to reconstruct the village-fortress was initiated in 1993 by archaeologist Jānis Apals (1930- 1911) who led the archaeological excavations there. Remains of 151 wood buildings were discovered, 14 of them were reconstructed.



SPECIAL PROTECTED CULTURAL AND HISTORICAL TERRITORY “THE VALLEY OF ABAVA RIVER”



Photo: E. Sulcs



KANDAVA HILLFORT

“THE VALLEY OF ABAVA RIVER”





GROBIŅA ARCHAEOLOGICAL ENSEMBLE



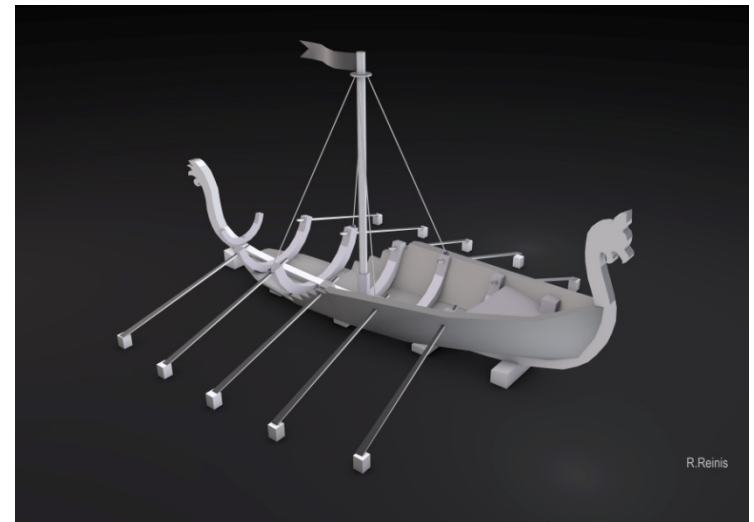
Photo: J. Urtāns

GROBIŅA ARCHAEOLOGICAL ENSEMBLE

RECONSTRUCTIONS:



FUTURE...



RECONSTRUCTIONS





Thank You for attention!